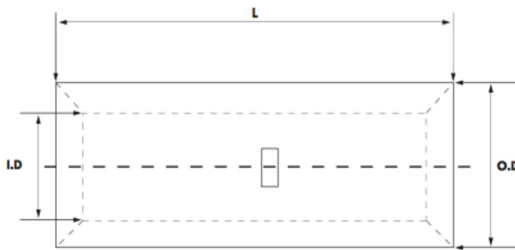


RADI-LUGS HEAVY DUTY COPPER TUBE SPLICE TERMINALS

E343654

CCL series of Copper tube splice terminals are produced from high conductivity copper tubing. Tin plated to provide corrosion resistance. Suitable for use at voltage up to 35KV provided connector is properly taped. 5KV is the maximum voltage in all bare splices

This series of product is tested and certified to UL-ZMVV, ANSI/UL 486A-486B and ANSI/UL 486C



Part Number	Cable AWG/MCM	Cable MMSQ	I.D	O.D	L	Wire Strip Length
CCL-1.5	16	1.5	1.8	3.7	22.0	8 mm
CCL -2.5	14	2.5	2.4	4.0	22.0	8 mm
CCL -4	12	4	3.1	4.8	22.0	8 mm
CCL -6	10	6	3.8	5.5	22.0	8 mm
CCL -10	6	10	4.7	7.1	22.0	8 mm
CCL -16	6	16	5.5	8.5	50.0	20 mm
CCL -25	4	25	7.0	10.0	50.0	20 mm
CCL -35	2	35	8.2	12.5	50.0	20 mm
CCL -50	1/0	50	10.0	14.5	56.0	22 mm
CCL -70	2/0	70	11.5	16.5	56.0	22 mm
CCL -95	3/0	95	13.5	19.0	70.0	30 mm
CCL -120	4/0	120	15.5	21.0	70.0	30 mm
CCL -150	300 MCM	150	17.0	23.5	80.0	35 mm
CCL -185	350 MCM	185	19.0	25.5	85.0	37 mm
CCL -240	500 MCM	240	21.5	29.0	90.0	42 mm
CCL -300	600 MCM	300	24.5	32.0	100.0	45 mm
CCL -400	750 MCM	400	26.8	38.5	150.0	70 mm

NOTE:

The above information corresponds to our actual knowledge and is deemed to be rendered correct and reliable. But they do not represent binding properties. Customers and end-users have to decide autonomously about the applications in the provided range. Under no circumstances Radiform Insulation Industries Pte Ltd is liable for any eventual, indirect or consequential damages arising from the sale, resale, transfer, use or misuse of the product. Our Liabilities are limited to replacing products due to manufacturing defects.